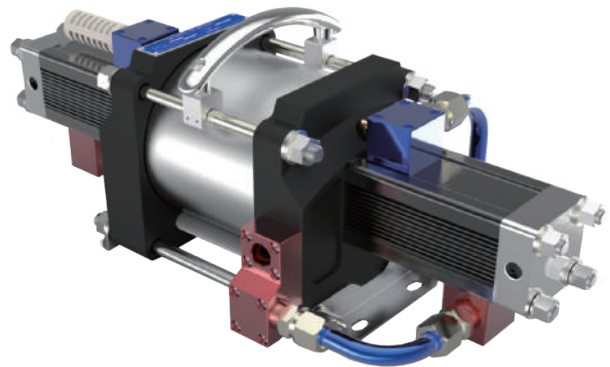
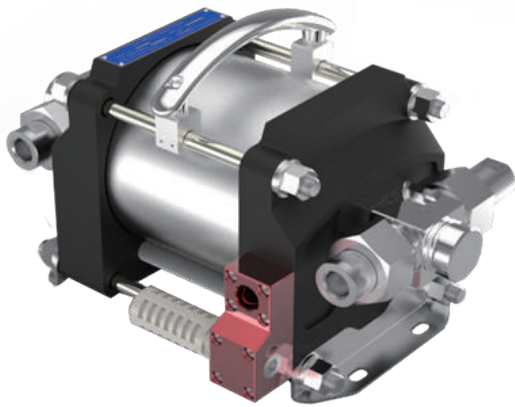


ULTRA HIGH-PRESSURE TECHNOLOGY



LEZERO Co., Ltd. is a professional high-tech company that combines High Pressure Unit design, manufacturing and maintenance. We own strong ability of R & D and advanced equipment for manufacturing and testing. Our main products are air driven liquid pumps, air driven gas boosters and high pressure components with the highest quality and the reasonable price. We sincerely hope that our products will contribute to develop in every field of industry.



LEZERO Head office, R&D Center



Smart-Valley D-801, #30 Song-do
mirae-ro, Yeonsu-gu, Incheon Korea
TEL : +82-32-837-5094
FAX : +82-32-837-5097
E-Mail : sales@lezero.co.kr



I-SAN Head office & Factory



49, Mayu-ro, 70Beon-gil, Siheung-si
Kyunggi-do, Korea
TEL : +82-31-498-4360
FAX : +82-31-498-4364
E-Mail : sales@i-san.co.kr

I-SAN Co., Ltd. is an affiliated company of LEZERO. I-SAN is one for the world class vacuum components supplier.

We manufacture of high quality vacuum products as below:

- Welded metal bellows.
 - Vacuum Angle valves.
 - Vacuum Gate valves
 - Magnetic Fluid seals
- etc..

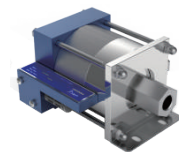
We will consistently provide high technology, high productivity, cost efficient, and excellent customer satisfaction to you.

AIR DRIVEN LIQUID PUMPS

Operating Pressures up to Max 60,000PSI (4,000Bar)

◆ Application

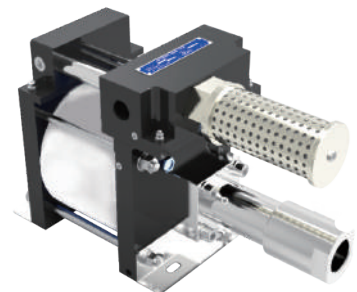
- Test Equipments
 - Hydraulic/ Tensile/ Pressure etc..
- Water blasting
- Aviation and Automotive Testing
 - Brake fluid, Skydrol, transmission fluid
- Holding / clamping
- Jacking / lifting
- Valve actuator control
- Chemical Fluid Transfer and Pressurization



LZS3-***P



LZS5-***P



LZS7-***P

◆ Line up

LZ S 5-*P**

└─┬─┘ Series number

S	Single Acting/Single Drive
D	Double Acting/Single Drive

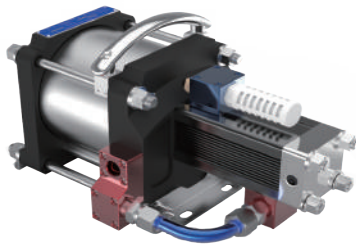
Model		3Series	5Series						7Series	
Ratio		220P	35P	60P	110P	150P	300P	450P	60P	110P
Type	S	■	■	■	■	■	■	■	■	■
	D	■	■	■	■	■	■	■	■	■

※ Refer to the catalogue for further details

AIR DRIVEN GAS BOOSTERS

Operating Pressures up to Max 15,000PSI (1,000Bar)

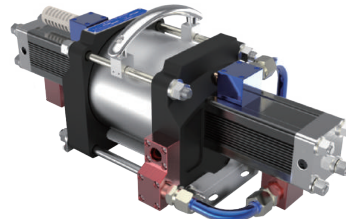
Single Acting, Single Air Drive



LZSG5-50P

LZDG5-50P

LZTG5-50P



Air Driven Gas Booster
Max 15,000 PSI (1,000 bar)

◆ Line up

LZ S G 5-50P

Series number
Gas booster

S	Single Acting/Single Drive
D	Double Acting/Single Drive
T	Two stages / Single Drive

※ T: Double Acting with two different pressure ratios

◆ Application

- Pressure Test
 - Leak test with high gas pressure
 - Plastic industry
 - Gas injection
 - Cylinder charge
 - Life support gas transfer
 - Vehicle refueling stations
- etc..

5Series	Type	Gas Supply Pressure (PSI)		Max Gas Outlet Pressure(PSI)	Piston Displacement per Cycle(cu.in)		Max Air Supply Pressure (PSI)	
		S & D			S & D	S		D
		min	max					
	15P	50	2,250	2,250	7.66	15.32	143	
	30P	100	4,500	4,500	3.76	7.52	143	
	50P	100	7,500	7,500	2.32	4.64	143	
	75P	250	11,250	11,250	1.55	3.1	143	

※ Refer to the catalogue for further details

ULTRA HIGH PRESSURE PRODUCTS

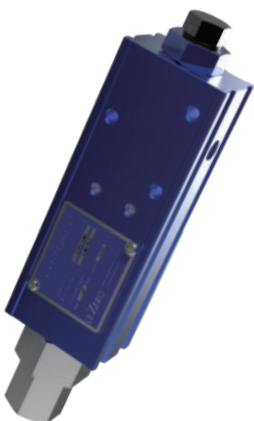
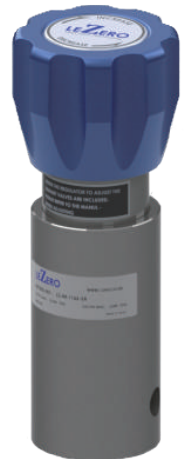


◆ HIGH-PRESSURE NEEDLE VALVE

Max Pressure (PSIG)	Model Straight/Angle	Orifice		Port Type
		mm	inch	
15,000	LZ-15HV-02N, 03N, 04N, 06N	4.5 - 12	0.18 - 0.47	NPT
20,000	LZ-20HV-02U, 03U, 05U	2.8 - 8	0.11 - 0.31	UNF
30,000	LZ-30HV-02U, 03U, 05U	3.0 - 3.5	0.12 - 0.14	UNF
60,000	LZ-60HV-02U, 03U, 05U	2.5 - 3.5	0.1 - 0.14	UNF

◆ HIGH-PRESSURE LIQUID & GAS REGULATOR

Model	Max In- (PSIG)	Pressure Range (PSIG)	Port	Flow Capacity (Cv)	Fluid
LZ-26-1000Series	10,000	5-10,000	1/4", 3/8"NPT	0.06	GAS
LZ-44-1100Series	10,000	0-6,000	1/4" NPT	0.06	GAS
LZ-44-1800Series	6,000	0-2,500	1/4" NPT	0.06 0.15 (exhaust)	GAS
LZ-54-2000Series	10,000	5-10,000	1/4- 1/2"NPT	0.06 0.05(exhaust)	Water



◆ HIGH-PRESSURE PILOT SWITCH VALVE

Model	Pressure Range (PSIG)	Connecting Port	
		Sensing Port	Air Port
LZ-E100	1,500-10,000	1/4" NPT	1/8" NPT
LZ-R250	5,000-25,000	1/4" NPT	1/8" NPT

ULTRA HIGH PRESSURE PRODUCTS



◆ HIGH-PRESSURE RELIEF VALVE

Model	Adjustable Range (PSI)
LZ-RV-100	1,000-10,000
LZ-RV-300	3,000-30,000
LZ-RV-600	10,000-60,000

◆ HIGH-PRESSURE CHECK VALVE

Max (PSIG)	Model	Orifice	
		mm	inch
15,000	LCV15 - 02N, 03N, 04N, 06N	2.4 - 13.1	0.18 - 0.52
20,000	LCV20 - 02U, 03U, 05U	2.8 - 8	0.11 - 0.31
30,000	LCV30 - 02U, 03U, 05U	2.4 - 6.4	0.1 - 0.25
60,000	LCV60 - 02U, 03U, 05U	2.4 - 6.4	0.1 - 0.25

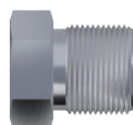


◆ HIGH-PRESSURE CONNECTION BLOCKS



TYPE	Model	Pressure (PSIG)
ELBOWS	ZL15-0**	15,000
	ZL20-0**	20,000
	ZL60-0**	60,000
TEES	ZT15-0**	15,000
	ZT20-0**	20,000
	ZT60-0**	60,000
CROSSES	ZX15-0**	15,000
	ZX20-0**	20,000
	ZX60-0**	60,000

◆ HIGH-PRESSURE CONNECTION COMPONENTS



Connections	Model
Grand	GL20.30.60-014
	GL20.30.60-038
	GL20.30.60-916
Collar	COL20.30.60-014
	COL20.30.60-038
	COL20.30.60-916
Plug	PL20.30.60-014
	PL20.30.60-038
	PL20.30.60-916

※ ** : Tube Port Size

※ Refer to the catalogue for further details

EQUIPMENTS



1500TON VALVE TESTER

- Operating pressure : 700bar
- Operating fluid : water



N2 GAS BOOSTER SYSTEM

- Operating pressure : 0~1,000bar
- Gas : N2, AIR



PSV RELIEF VALVE TEST BENCH

- Water operating pressure : 1,000bar
- Gas operating pressure : 7,00bar
- Clamp operating pressure : 250bar
- Clamp Capacity : 40ton



WATER PRESSURE TESTER

Pressure range : 40~700BAR

We will do our best efforts to supply the better products and services.
Please do not hesitate to contact us for any questions and further information.
All of our staffs are always waiting for your requirements.
Thank you !

LEZERO

T E C H N O L O G Y

www.lezero.co.kr

Smart-Valley D-801, #30 Song-do mirae-ro, Yeonsu-gu, Incheon Korea
TEL : +82-32-837-5094 FAX: +82-32-837-5097 E-Mail: sales@lezero.co.kr